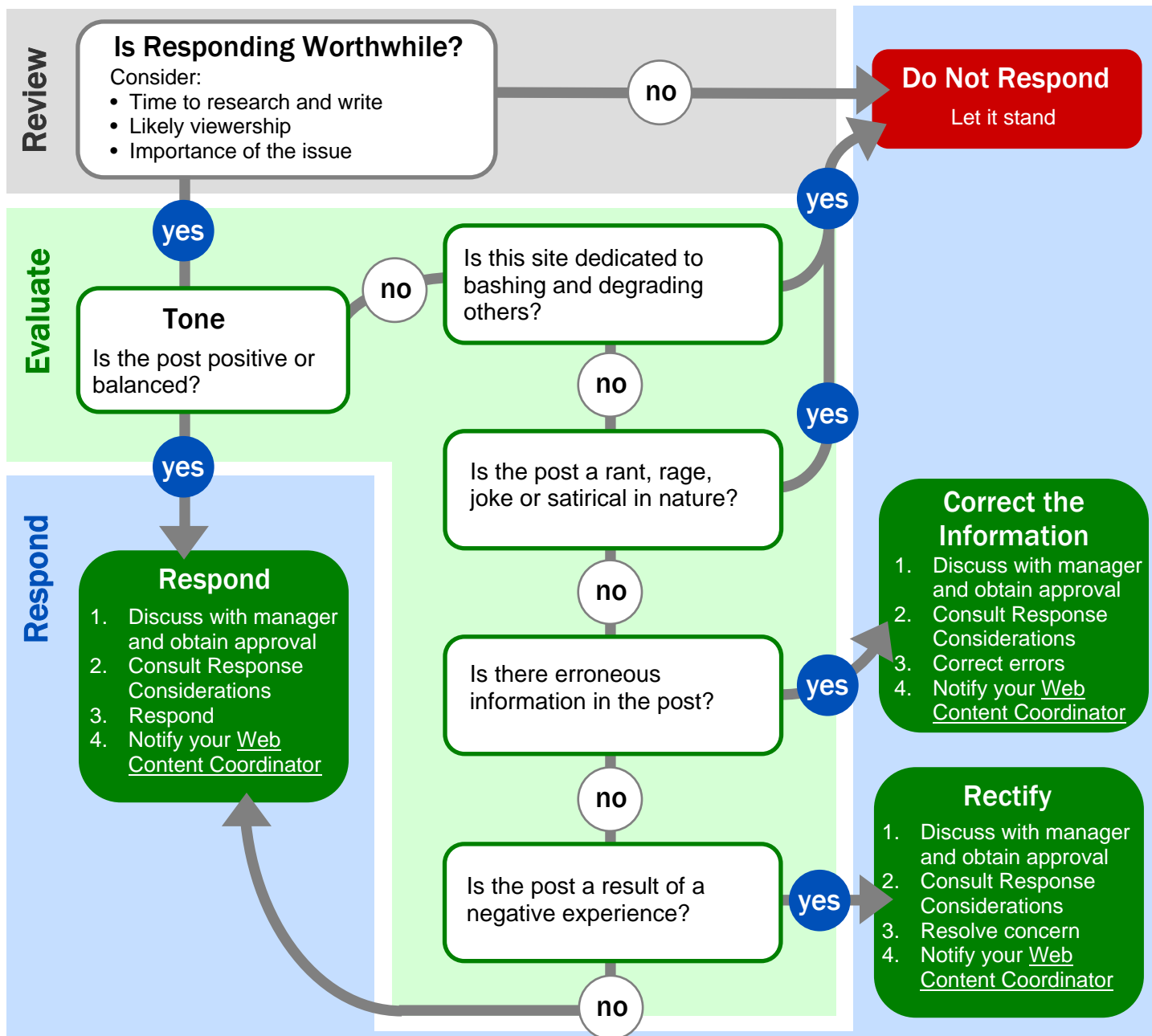




Should I Respond Online On EPA's Behalf?

Questions to guide my decision – Use with Interim Guidance,
“Representing EPA Online Using Social Media”



Response Considerations

Be Transparent – Disclose your affiliation (EPA or contractor).

Cite Your Sources – Stick to facts and cite your sources by including hyperlinks, video, images, etc.

Respect Your Time – Do not spend more time than the response is worth.

Use a Professional Tone – Respond in a tone that reflects positively on EPA.